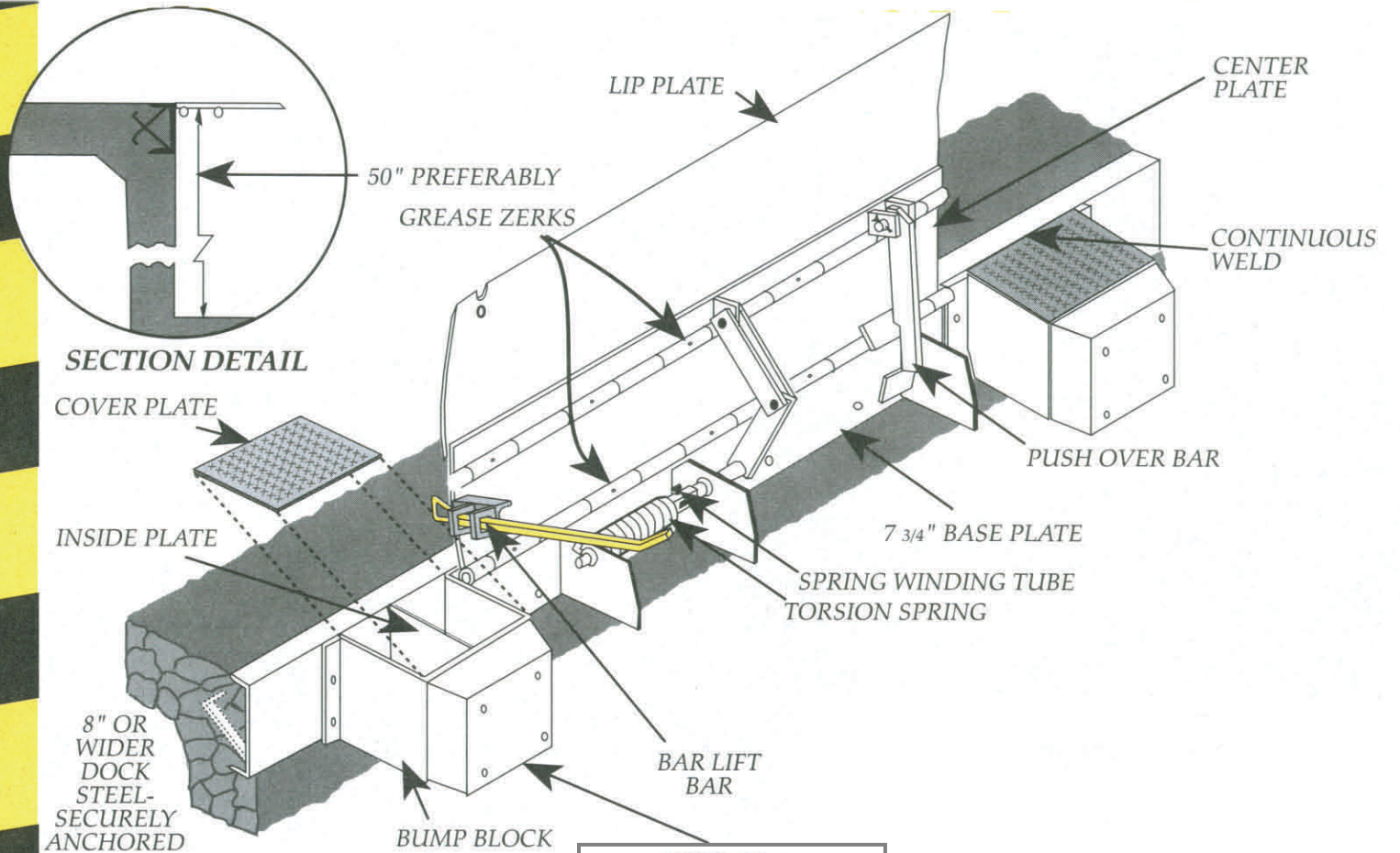


# Bar Actuated Edge-of-Dock Leveler



**NOTES:**  
 Deck & Lip - 55,000 lb. min. yield steel.  
 30,000 lb Capacity Units include C1045 cold rolled 11/16" rod and cold drawn seamless tubing (1-1/4" OD, 5/16" wall).

Note: 35,000 lb. Units Available

MOLDED CORD RUBBER  
 Note: 4 hole shown (2 hole standard)

