

# ABC DOCKS, LLC

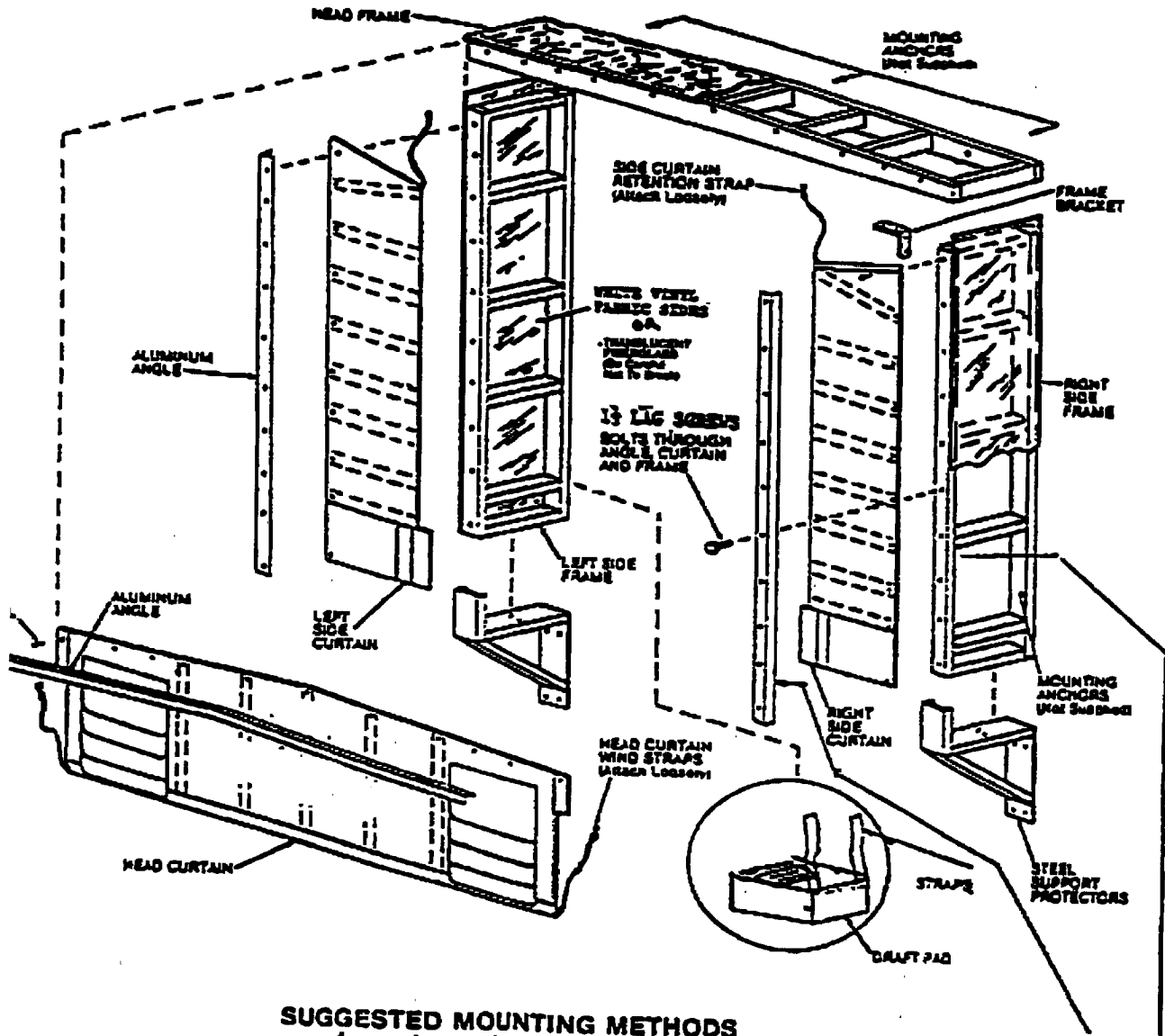


## INSTALLATION INSTRUCTIONS - 'RT' SERIES RIGID TRUCK SHELTER

1. **FIND CENTERLINE OF DOOR OPENING & SHELTER OUTER EDGES**
  - a. Measure width of door & mark centerline on the dock floor and on top of the door opening.
  - b. Take one half of the unit width and mark this distance on both sides of the centerline.
2. **MOUNTING STEEL BUMPERS**
  - a. The top surface should be placed level with dock floor.
  - b. The outside edge of the bumper should be 1" outside the wall marking for the unit width.
  - c. Bumpers can be used for either right or left.
3. **ASSEMBLING CURTAINS TO SIDE FRAMES**
  - a. Remove aluminum flashing from frame.
  - b. Place curtain on frame to align holes.
  - c. Nail curtain to frame at the top edges.
  - d. Bolt together flashing, curtain and frame with hardware provided.
  - At this time remove the elastic wind restraints (bungee cords) from the loops in the edges of the head curtain. Fasten one end to the top of side frame just below the top pocket. After the head frame is in place stretch cord to just above the head curtain and fasten eye bolt.
4. **MOUNTING SIDE FRAMES TO WALL**
  - a. Side frames are mounted on top of and 1" inside of the outside edge of the bumper guards.
  - b. Fasten frame to the wall in a minimum of three places.
5. **MOUNT SIDE FRAMES TO BUMPER GUARDS**
  - a. Use pre-drilled holes in top flat surface of bumper guards and bottom of side frame.
  - b. Use the same bolt assembly as for face curtains.
6. **ATTACHING HEAD CURTAIN TO HEAD FRAME**
  - a. Remove flashing from frame.
  - b. Place curtain on frame to align holes.
  - c. Nail curtain on frame at the top edge.
  - d. Bolt together flashing, curtain and frame with hardware provided.
7. **MOUNTING HEAD FRAME TO WALL**
  - a. Position head-frame on top of side frames.
  - b. Extended aluminum flashing on side frames fits under head-frame aluminum flashing.
  - c. Attach bungee end from curtain to wood to prevent curtain from flapping in the wind.
8. **ATTACHING DRAFT PADS**
  - a. The bottom of the pad should be level with the dock floor.
  - b. Draft pads are nailed to bottom of the side frame.
  - c. Nail the top strap to the horizontal frame.
9. **CAULKING**
  - a. We recommend using a silicone caulk to be used around the entire outer edge of the unit.
  - b. Caulk between header frames when two or more units are attached.



P. O. BOX 1028 • FRANKLIN, TN 37065-1028  
 800-394-5944 • 615-791-5964 • FAX 615-791-4431



**SUGGESTED MOUNTING METHODS**  
*(mounting anchors not included)*

**Common Member Shelters**

Three (3) anchors per frame member recommended—one middle and one near each end. Use more if necessary.

**CONCRETE BLOCK OR BRICK WALL:** Try to hit mortar joints. Use 1/2" or 3/8" x 4" expansion anchors. Use through bolt fastening (minimum 2 per frame member) if anchors will not hold—3/8" threaded rod is recommended.

**PRECAST CONCRETE:** Same as above

**METAL SKIN BUILDING:** Through bolt fastening as above. Use a back up plate (steel or wood) to support bolts, or anchor through existing building girt or purlin when possible.

Inside Verticals member is a 2 X 6. Aluminum Angle is replaced by a 3" Aluminum Flat. Side curtains are centered on 2 X 6 and attached with 3" Aluminum Flat. Steel Support Protector is by 2 Angles on either side of the channel.